

SITE 05

DEVELOPMENT OF TOURISM RELATED
FACILITIES FOR MARANAHALLI SITE AT
SAKLESH PURA TALUK, HASSAN DISTRICT
UNDER THE CIRCUIT DEVELOPMENT FOR SOUTHERN
KARNATAKA (MYSURU – SRIRANGAPATTANA –
HASSAN – BELURU – HALEBIDU)

PROJECT INFORMATION MEMORANDUM



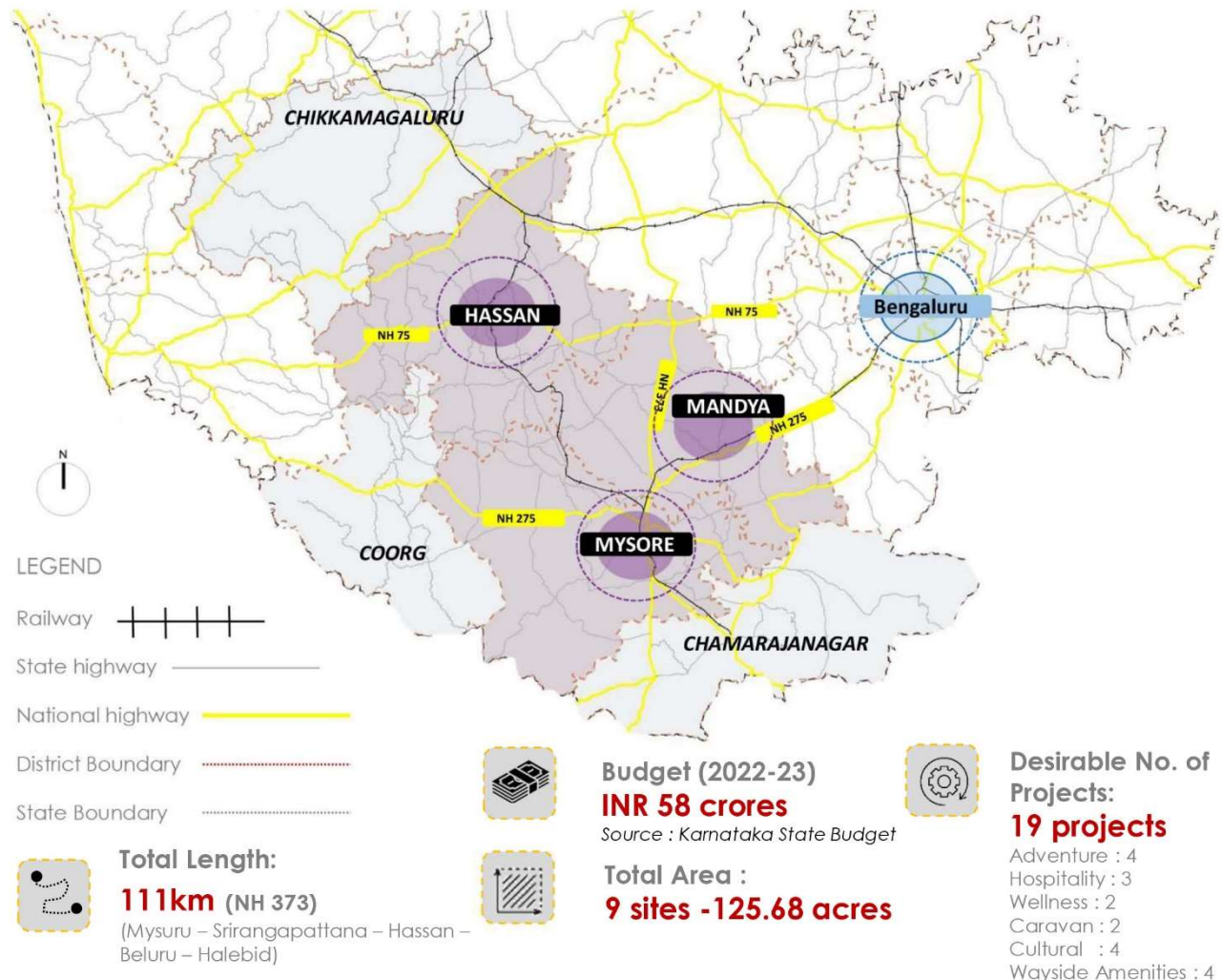
Project Information Memorandum

PROJECT BACKGROUND

Karnataka with its wide variety of tourism offerings such as beaches, hill stations, heritage monuments, national parks, wildlife sanctuaries etc. continues to be a prime tourism destination in India. Given the variety of tourism assets, the state is promoted under the tagline “One State, Many Worlds”. Department of Tourism, Government of Karnataka (the “DoT” or the “Client”) established in 1974, is vested with the responsibility to develop and promote Karnataka Tourism.

DoT intends to develop Tourist Infrastructure across sites in Circuit in Southern Karnataka (Mysuru – Srirangapattana – Hassan – Beluru – Halebidu) on PPP mode. The Karnataka State Budget 2022-23 has proposed for the development of Hampi – Badami – Aihole – Pattadakal – Vijayapura tourist circuit (North Circuit) and Mysuru – Srirangapatna – Hassan – Belur – Halebidu tourism circuit (South Circuit) to be developed under the PPP model to promote tourism. Development of the circuit is expected to converge with the support offered for tourism projects under the Karnataka Tourism Policy 2020-26.

ABOUT SOUTHERN TOURISM CIRCUIT



Project Information Memorandum

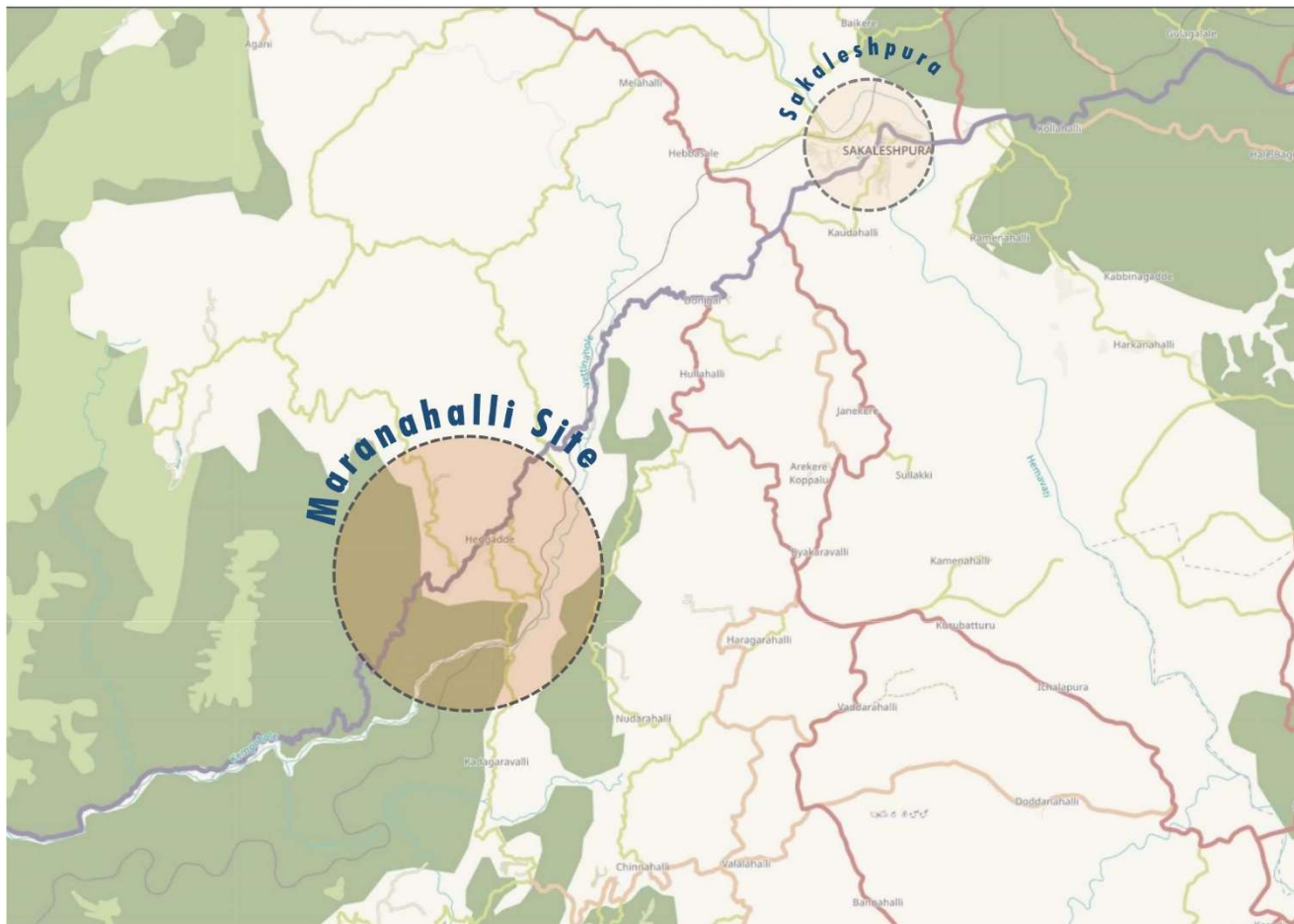
PROJECT SITE

- The location of the site is an added advantage for it to serve as wayside amenity. The proposed development is a composition of hotel and recreational facilities with basic tourist amenities
- The site already has an existing building that is currently unused and in a dilapidated condition. As the site is located at the Bangalore- Mangalore Highway, it can be developed into a wayside amenity (like restaurant) or a budget hotel.



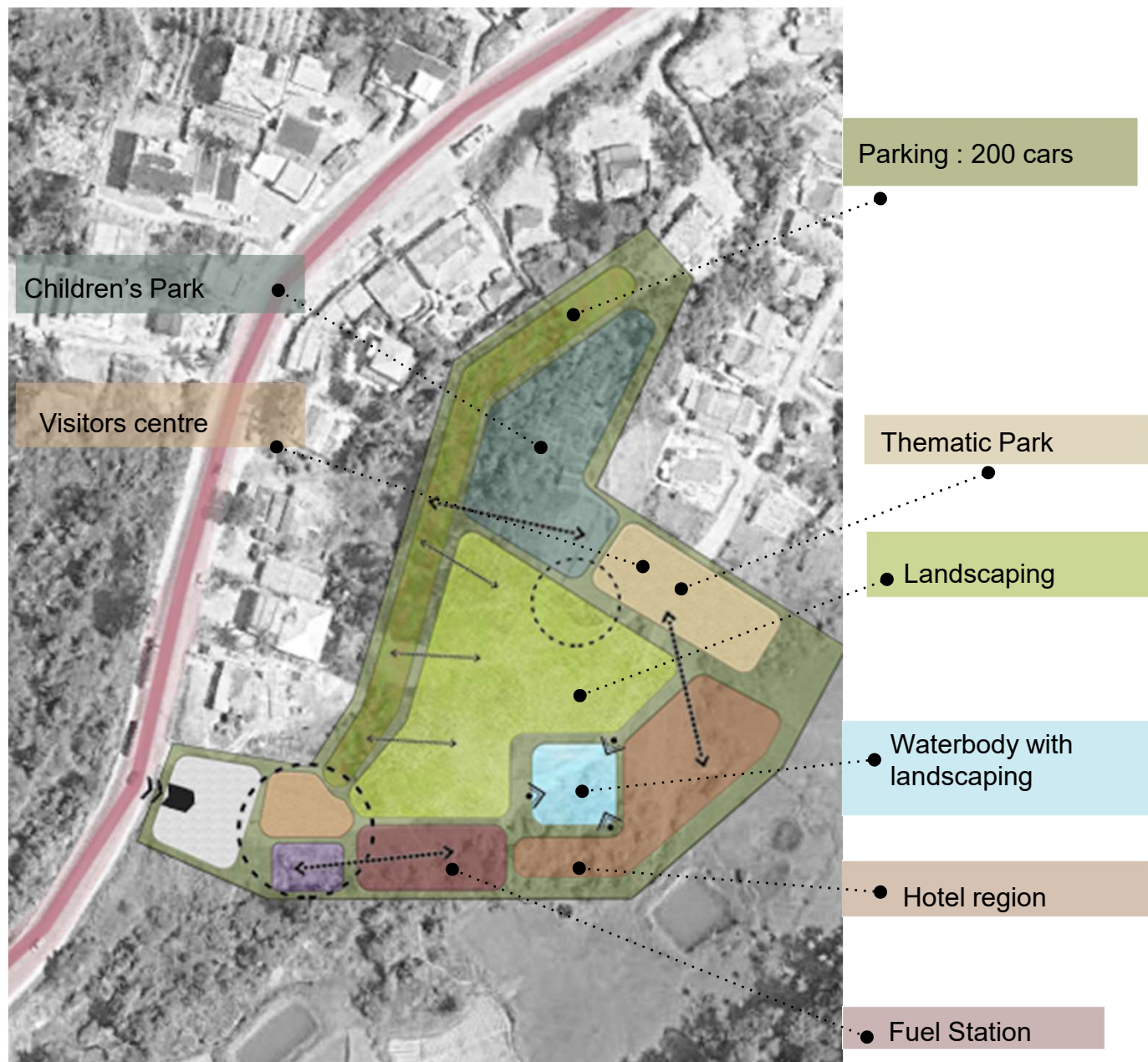
SITE	DETAILS
SITE AREA	4 acres
LOCATION	Bangalore – Mangalore Highway near to Maranahalli
LAND OWNERSHIP	Department of Tourism, GoK

LOCATION AND CONNECTIVITY



Project Information Memorandum

CONCEPT MASTERPLAN



SITE POTENTIAL

Site	Cultural	Hospitality	Adventure	Wayside Amenities	Wellness
HASSAN					
MARANAHALLI SITE, HEGGADDA TALUK		✓		✓	

Project Information Memorandum

PROJECT COST

The total project landed cost is tentatively **Rs.8.56 cr**

PROPOSED COMPONENTS

The components are :

- 1.Children's Park
- 2.Parking
- 3.Landscaping
- 4.Fuel Station
- 5.Hotel Region
- 6.Waterbody with landscaping
- 7.Thematic Park
- 8.Visitor Centre



Restaurant



Restaurant